

# Med-QUEST Healthcare Advisory Committee

## December 13, 2023



Med-QUEST, DHS

# Med-QUEST Healthcare Advisory Committee Agenda

- I. Welcome/Call to Order
- II. Introductions/Roll Call
- III. Review of meeting participation guidelines and process
- IV. Med-QUEST Updates - Presentations on current Med-QUEST program activities
  - a. Stay Well Stay Covered – Restart of the eligibility renewals process
  - b. Section 1115 Demonstration Renewal for 2024
  - c. Dual Eligible Special Needs Plans for Medicare and Medicaid Enrollees: overview and website updates
  - d. Other updates
  - e. Public Comment
- V. State Plan Amendment Presentations and Discussions
  - a. State Plan Amendment: Updates - Presentation on the status of State Plan Amendments previously reviewed by the MHAC
  - b. State Plan Amendments: New - Presentation of State Plan Amendments currently being submitted for CMS approval
    - i. SPA 23-0008 Payment for Medical Professional Services
    - ii. SPA 24-0002 Diabetes Prevention Program
  - c. State Plan Amendments: Coming Soon – Presentation on State Plan Amendments
  - d. Public Comment
- VI. Next Meeting: Wednesday, February 21, 2024.
- VII. Adjourn



## **IV. MQD UPDATES**

### **Stay Well Stay Covered - Re-Restart of Renewals Process**

Section 1115 Demonstration Renewal  
Duals Eligible Medicare/Medicaid Special Needs Plans

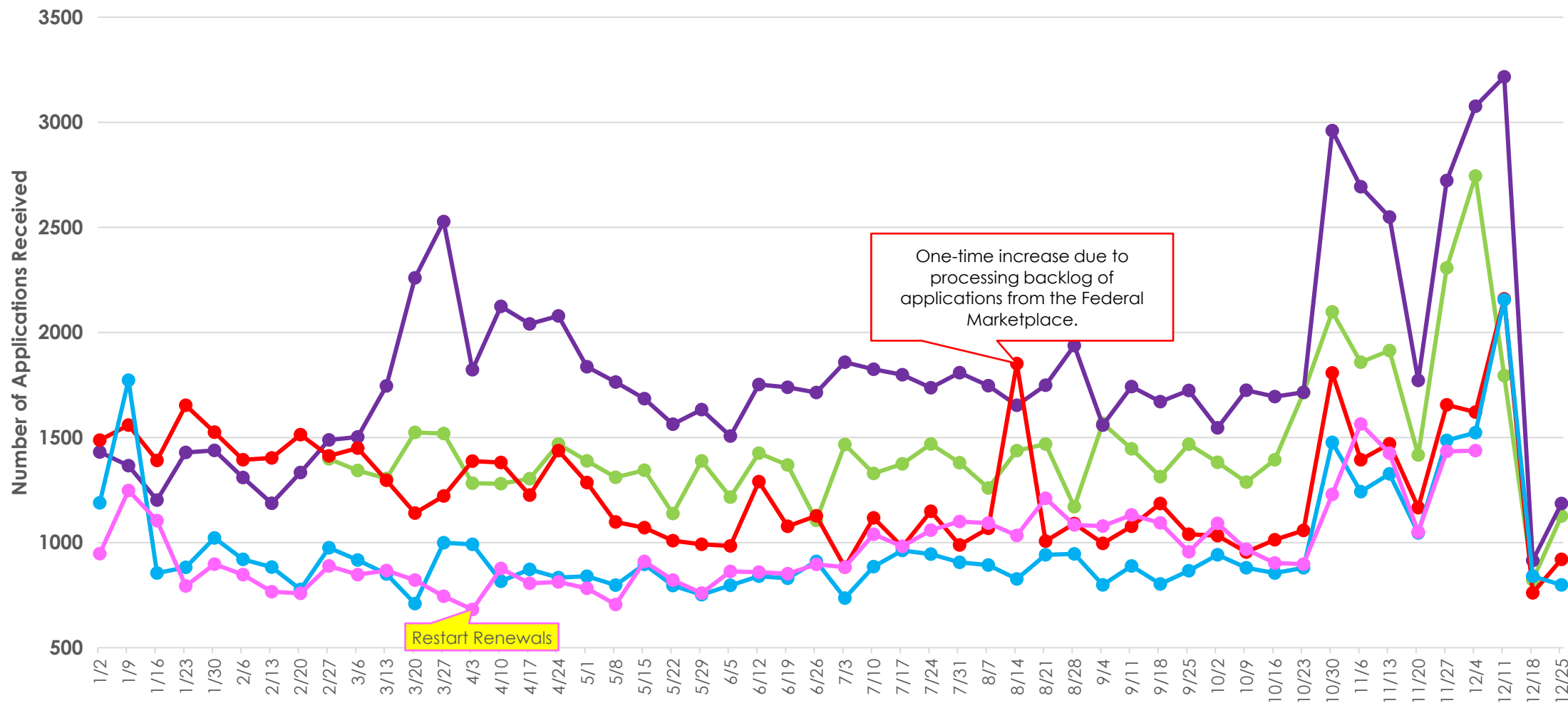
Public Comment



# Hawai'i Medicaid Applications Received:

March 2020 to March 2023 MQD Received 209,251 Applications

As of April 2023-December 9, 2023 MQD has received 36,374 Applications

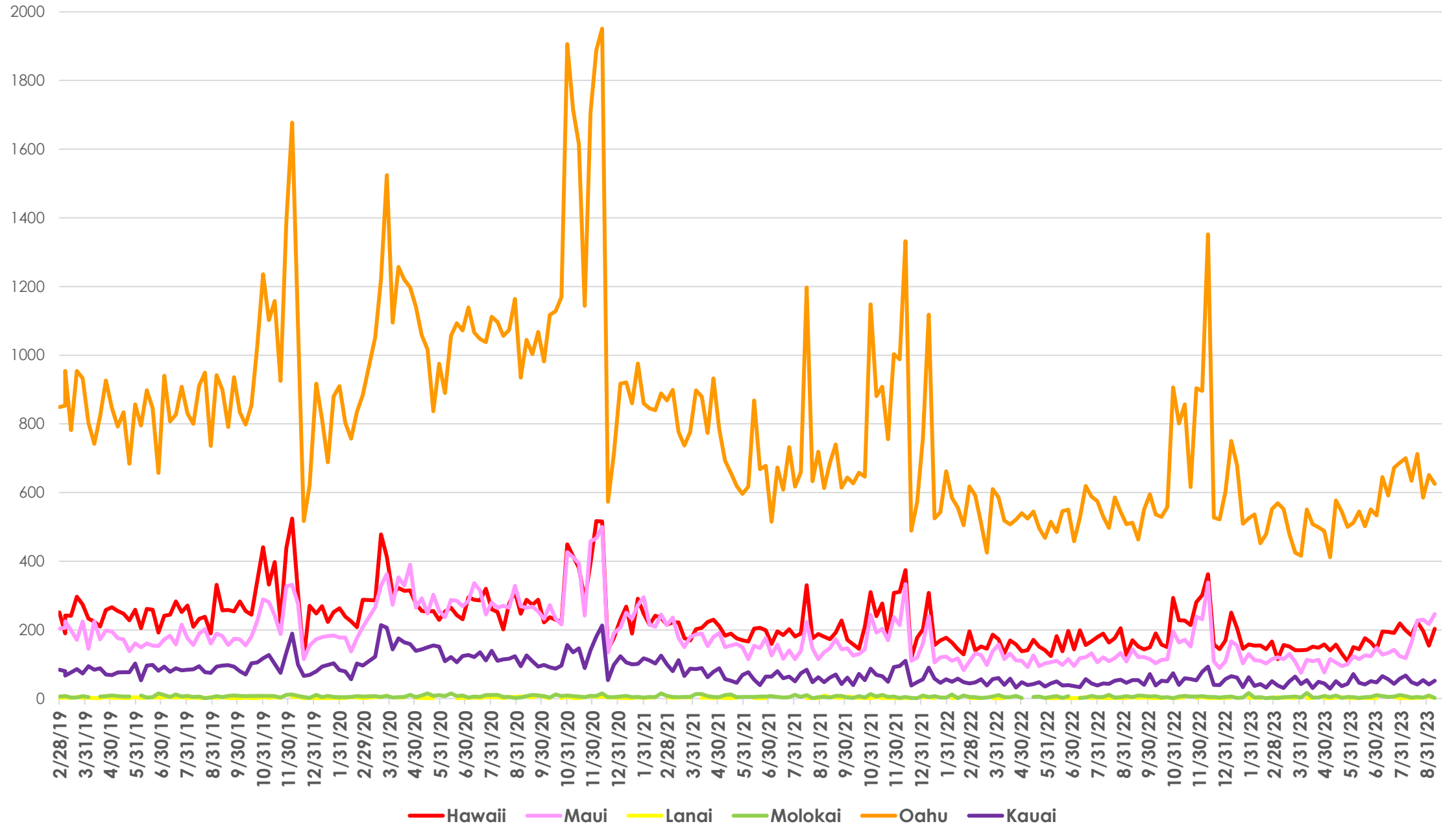


Week Beginning Based on 2022 Date and Corresponding Weeks From Previous and Subsequent Years

2019 2020 2021 2022 2023

Application increase in Nov-Dec (and in Jan 2022-2023) reflects additional application activity due to the Federal Marketplace open enrollment period.

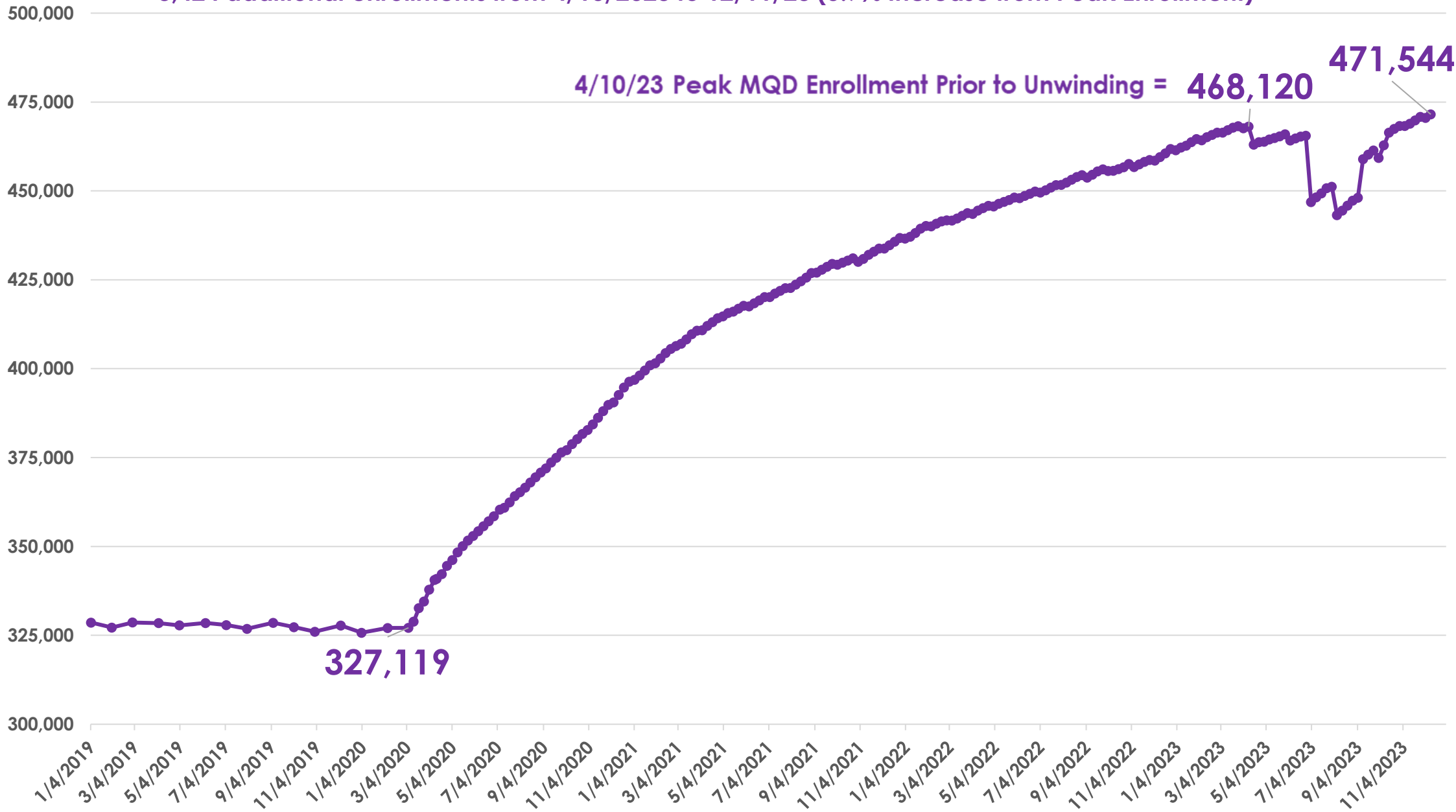
# Applications by Island from March 2019 through September 16, 2023



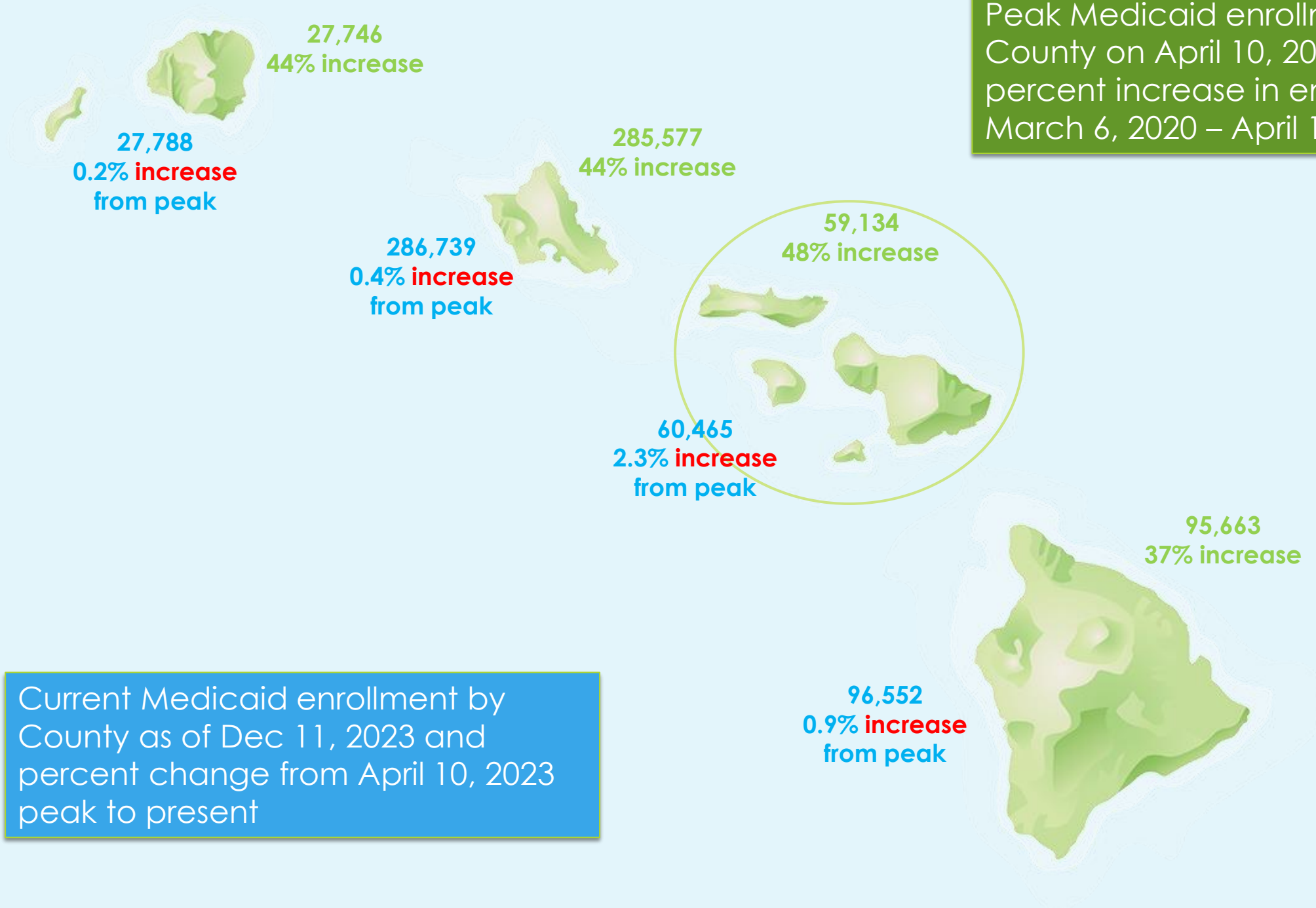
# Hawai'i Medicaid Monthly Enrollment: January 2019 to December 11, 2023

141,001 New Enrollments from 3/6/2020 – 4/10/2023 (43% Increase)

3,424 additional enrollments from 4/10/2023 to 12/11/23 (0.7% Increase from Peak Enrollment)



Peak Medicaid enrollment by County on April 10, 2023 and percent increase in enrollments from March 6, 2020 – April 10, 2023



Current Medicaid enrollment by County as of Dec 11, 2023 and percent change from April 10, 2023 peak to present





State of Hawai'i Department of Human Services

## Med-QUEST Division

SEARCH SITE

HOME ABOUT ▾ MEMBERS & APPLICANTS ▾ PLANS & PROVIDERS ▾ RESOURCES ▾ FAQ

Home > Members & Applicants > Already Covered > Stay Well Stay Covered Toolkit

here.' The background also shows a photo of a family."/>

ALoha

STATE OF HAWAII  
1959

QUEST Hawai'i

DEPARTMENT OF HUMAN SERVICES

**STAY WELL  
STAY COVERED**

Our 3-month pause ended on November 30, 2023 and we have restarted our renewals process. Please be on the lookout for your pink letter in the mail. For details on when you might receive your letter, click [here](#).

Please know that the following applies for all Med-QUEST members statewide:

- Med-QUEST has paused terminations for the remainder of 2023, meaning coverage will continue through at least the end of this year without interruption except for those who voluntarily ask Med-QUEST to end their coverage, those who have moved out of state or those who are deceased.
- If Med-QUEST can successfully renew your eligibility at this time, we will, and a pink letter confirming your renewed coverage will be mailed to you.
- If Med-QUEST is unable to renew your coverage at this time, your renewal date will be pushed out to a new month after this pause.



#### REVISED ELIGIBILITY RENEWAL SCHEDULE:

Renewal month listed in the letter you received in March 2023:		Your new Renewal month after the pause:
September 2023	➡	December 2023
October 2023	➡	January 2024
November 2023	➡	February 2024
December 2023	➡	March 2024
January 2024	➡	April 2024
February 2024	➡	May 2024
March 2024	➡	June 2024

#### FOR MAUI COUNTY\* ONLY:

Renewal month listed in the letter you received in March 2023:		Your new Renewal month after the pause:
September 2023	➡	April 2024
October 2023	➡	April 2024
November 2023	➡	May 2024
December 2023	➡	May 2024
January 2024	➡	June 2024
February 2024	➡	June 2024
March 2024	➡	June 2024

**\*All those living in West Maui as of August 2023 will not go through renewal until June 2024**

*These revised schedules apply to those Med-QUEST Members who have not gone through their eligibility renewal in 2023.*

*Please note that if our automated system is able to process your renewal without reaching out to you, you will receive a notice confirming your successful renewal. This may happen prior to the months listed above.*



UPDATE! Med-QUEST stands in support of our Maui Nui community and has temporarily paused new eligibility renewals. Renewals for Maui County residents will begin again in April 2024 for those whose eligibility runs through May 2024.

*Please note that if you previously submitted your renewal form, MQD will take appropriate action on your case.*

**People who are already covered by Med-QUEST  
DO NOT need to take any action at this time. Their coverage will be maintained.**

**People who are not currently covered by Med-QUEST can apply for coverage in the following ways:**

- We encourage folks who have access to computers to apply online as the fastest way to apply. <https://medical.mybenefits.hawaii.gov/>
- Those without computer access can apply over the phone by calling **1-800-316-8005**. Hold times are a bit longer than usual but please stay on the line so we can be of service, We have expanded our call center hours to Monday – Saturday from 7:00 am – 7:00 pm.
- We have MQD staff, some Health Plan representatives and Kokua/community organizations on the ground at a variety of outreach venues who are helping with new applications.
- MQD's Eligibility Office in Wailuku is also open and ready to provide assistance M-F from 7:45 am – 4:30 pm in Wailuku at Millyard Plaza, 210 Imi Kala Street, Suite 101

We've simplified the language in the renewal form and the new version of the form is translated into 18 additional languages and available on our MQD website



State of Hawai'i Department of Human Services  
**Med-QUEST Division**

HOME ABOUT MEMBERS & APPLICANTS PLANS & PROVIDERS RESOURCES FAQ

Home > Members & Applicants > Already Covered > Stay Well Stay Covered Toolkit

**STAY WELL STAY COVERED**

Our 3-month pause ended on November 30, 2023 and we have restarted our renewals process. Please be on the lookout for your pink letter in the mail. For details on when you might receive your letter, click [here](#).

Please know that the following applies for all Med-QUEST members statewide:

- Med-QUEST has paused terminations for the remainder of 2023, meaning coverage will continue through at least the end of this year without interruption except for those who voluntarily ask Med-QUEST to end their coverage, those who have moved out of state or those who are deceased.
- If Med-QUEST can successfully renew your eligibility at this time, we will, and a pink letter confirming your renewed coverage will be mailed to you.
- If Med-QUEST is unable to renew your coverage at this time, your renewal date will be pushed out to a new month after this pause.

Throughout the pandemic, all Medicaid members received continuous uninterrupted coverage amid the public health emergency. Med-QUEST Division will begin reaching out to members in March 2023 to let them know what month their eligibility will be redetermined. This eligibility renewal work will begin in April and be spread out across 12 months.

FAQs Press Release Videos Toolkit **Letters/Notices** Data/Reports

DHS Forms 1100B-2 (Medical Eligibility Renewal Form) [Click here for Renewal Schedule](#)

English  
Chinese - Simplified  
Chinese - Traditional  
Chuukese  
Ilokano  
Hawaiian  
Japanese  
Korean  
Kosraean  
Marshallese  
Pohnpeian  
Russian  
Samoan  
Spanish  
Tagalog  
Thai  
Tongan  
Ukrainian  
Vietnamese

## **IV. MQD UPDATES**

**Stay Well Stay Covered - Re-Restart of Renewals Process**

### **Section 1115 Demonstration Renewal**

**Duals Eligible Medicare/Medicaid Special Needs Plans  
Public Comment**



# Hawaii's Section 1115 Demonstration Renewal

- Hawai'i implemented its Section 1115 Demonstration on August 1, 1994, and has since renewed six times. QUEST was designed to increase access to health care, control the rate of annual increases in expenditures, and serve as a mechanism for delivery system innovation.
- Draft renewal public comment from 10/16/23-11/16/23; Submit to CMS no later than 2/1/2024 with a target submission of December 2023.

The current Section 1115 Demonstration authorizes the following:

## Quest Integration Mandatory Managed Care

Hawai'i provides coverage to its beneficiaries through mandatory managed care. MQD makes capitated payments to five managed care organizations currently operating in the state.

## Behavioral Health

Beneficiaries have access to standard behavioral health services through QI health plans. For some individuals, behavioral health services are provided through Community Care Services (CCS). *Note: will expand SUD treatment to include contingency management.*

## Home and Community Based Services (HCBS)

Hawai'i provides HCBS to support member's ability to live safely in the community in the least restrictive setting of their choice.  
*Note: Will add Assisted Living Facilities to At-Risk and telehealth/PHE flexibilities.*

## Community Integration Services (CIS)

Hawai'i provides eligible individuals with housing supports, including pre-tenancy supports, tenancy sustaining supports, and limited financial housing assistance (e.g., security deposit, one month rent).

# Hawaii's Section 1115 Demonstration - Renewal

New and expanded Initiatives primarily focus on health-related social needs and expanded services for specific populations to better enable the State to support a whole-person approach to care.

## Continuous Eligibility for keiki

- **Continuous Medicaid coverage** to age 6 for keiki **0-6**; and
- **Two year continuous eligibility** for keiki ages **6 to 19**

## Community Integration Services +

### Medical Respite:

- ✓ Short-term post-hospitalization stays
- ✓ Recuperative Care

### Expanded Rental and Utility Assistance

- ✓ Housing **application costs**;
- ✓ Utility set up and up to **6 months of utility payments**, including past due utility payments; and
- ✓ Up to **6 months of rent**, including past due payments.

## Nutritional Supports

- **Nutrition education**
- **Fruit and Vegetable Prescription/Protein Boxes**
- **Meals and pantry restocking**
- **Medically Tailored Meals and Groceries**

## Native Hawaiian Cultural/Healing Practices

*Lomilomi* - the traditional healing practice of physiotherapy and massage;

*Ho'oponopono* - the practice of peacemaking which can restore and maintain healthy relationships;

*Hula* - a form of dance that seeks to improve health through physical activity, mindfulness practices, and social interaction.

*Lā'au lapa'au* - an herbalist healing practice;

*'Ai pono* the practice of holistic nutrition therapy;

*Hāpai hānau* - traditional birthing practices

## Justice-Involved Population

**Medicaid enrolled justice-involved individuals will receive up to 90-days prior to release:**

- ✓ Case management and care coordination;
- ✓ Physical and behavioral health clinical consultation services provided by carceral or in-reach community-based providers;
- ✓ Laboratory and radiology services;
- ✓ Durable Medical Equipment (DME); and
- ✓ A 30-day supply of medications, for use post-release.



## **IV. MQD UPDATES**

Stay Well Stay Covered - Re-Restart of Renewals Process  
Section 1115 Demonstration Renewal

**Dual Eligible Special Needs Plans for Medicare and Medicaid Enrollees**

Public Comment





# Dual Eligible Special Needs Plans Introduction



Individuals who qualify and are eligible for both Medicare and Medicaid are dual eligible

Dual eligible individuals qualify for a dual eligible special needs plan in Hawaii

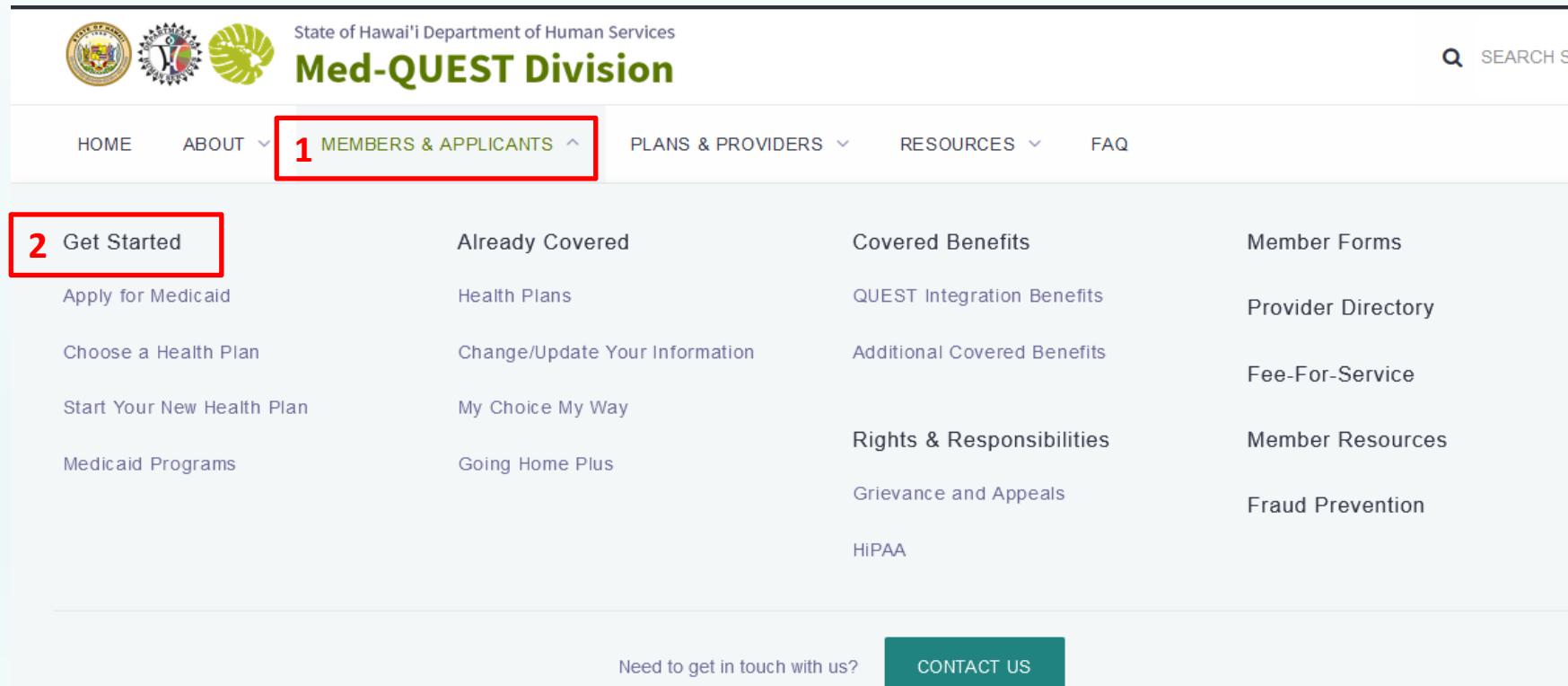
Dual eligible special needs plans are a type of Medicare Advantage plan and help coordinate an individual's Medicare and Medicaid benefits

There are two types of dual eligible special needs plans: Highly Integrated Dual Eligible Special Needs Plans (HIDE-SNP) and Fully Integrated Dual Eligible Special Needs Plan (FIDE-SNP)



# Dual Eligible Special Needs Plans Webpage

- Website URL:
  - ❖ [medquest.hawaii.gov/dsnp](https://medquest.hawaii.gov/dsnp)
  - ❖ [medquest.hawaii.gov/DSNP](https://medquest.hawaii.gov/DSNP)
- Additional webpage navigation:
  - ❖ [medquest.hawaii.gov](https://medquest.hawaii.gov)



The screenshot displays the Med-QUEST Division website. The header includes the State of Hawai'i Department of Human Services logo and the text "Med-QUEST Division". A search bar is located in the top right corner. The main navigation menu is highlighted with a red box and labeled "1 MEMBERS & APPLICANTS". Below this, a sub-menu is shown with a red box labeled "2 Get Started" next to the "Get Started" link. The sub-menu lists various options for members and applicants, including "Apply for Medicaid", "Choose a Health Plan", "Start Your New Health Plan", "Medicaid Programs", "Already Covered", "Health Plans", "Change/Update Your Information", "My Choice My Way", "Going Home Plus", "Covered Benefits", "QUEST Integration Benefits", "Additional Covered Benefits", "Rights & Responsibilities", "Grievance and Appeals", "HIPAA", "Member Forms", "Provider Directory", "Fee-For-Service", "Member Resources", and "Fraud Prevention". A footer section contains the text "Need to get in touch with us?" and a "CONTACT US" button.

State of Hawai'i Department of Human Services  
**Med-QUEST Division**

HOME ABOUT **1 MEMBERS & APPLICANTS** PLANS & PROVIDERS RESOURCES FAQ

**2 Get Started**

- Apply for Medicaid
- Choose a Health Plan
- Start Your New Health Plan
- Medicaid Programs

- Already Covered
  - Health Plans
  - Change/Update Your Information
  - My Choice My Way
  - Going Home Plus

- Covered Benefits
  - QUEST Integration Benefits
  - Additional Covered Benefits
  - Rights & Responsibilities
  - Grievance and Appeals
  - HIPAA

- Member Forms
- Provider Directory
- Fee-For-Service
- Member Resources
- Fraud Prevention

Need to get in touch with us? [CONTACT US](#)

# Dual Eligible Special Needs Plans Webpage

[additional webpage navigation continued]

[Home](#) > [Members & Applicants](#) > [Get Started](#)

## Get Started

The Med-QUEST Division provides health care benefits to Hawai'i residents who are eligible for Medicaid through QUEST Integration.

With QUEST Integration, all eligible members of your family can choose a health plan that fits their health care needs.

And when you reach age 65 and transition into Medicare or if you develop a disability, you won't need to change your health plan. You can stay in the same health plan.

You can choose traditional Medicare or a different Medicare Advantage plan. All QUEST Integration health plans offer Medicare plans and many provide extra benefits at no cost. Using the same health plan for Medicare and Medicaid may help you coordinate services, get more benefits, and lower your drug costs. Visit [medicare.gov](https://www.medicare.gov) to learn about your options.

[Fast Start: Apply Now →](#)

## Step 1: Are You Eligible?

You can find out if you and your family could qualify for help paying for health insurance.

[Get Started](#) >

[Already Covered](#) >

[Provider Directory](#)

[Covered Benefits](#) >

[Member Forms](#)

[Fee-For-Service](#)

[Member Resources](#)

[Fraud Prevention](#)

[Rights & Responsibilities](#) >

[KOLEA Health Plan Selection](#) >

**3** [Dual Eligible Special Needs Plan](#)



# Dual Eligible Special Needs Plans Webpage



State of Hawai'i Department of Human Services  
**Med-QUEST Division**

SEARCH SITE

[HOME](#) [ABOUT](#) [MEMBERS & APPLICANTS](#) [PLANS & PROVIDERS](#) [RESOURCES](#) [FAQ](#)

[Home](#) > [Members & Applicants](#) > Dual Eligible Special Needs Plan

## Dual Eligible Special Needs Plans for Medicare and Medicaid Enrollees

[Member](#) [FAQ](#) [Program Details](#)



# Dual Eligible Special Needs Plans Webpage

## Member Tab

- High-level overview and information for individuals who have both Medicare and Medicaid
- Dual eligible special needs plan types, overview and options
- State Health Insurance Assistance Program (SHIP) information

### Dual Eligible Special Needs Plans for Medicare and Medicaid Enrollees

Member

FAQ

Program Details

#### Information for individuals who have both Medicare and Medicaid

Individuals who qualify and are eligible for both Medicare and Medicaid are **dual eligible**.

Hawaii's goal is to provide excellent care for Hawaii's dual eligible beneficiaries by streamlining a member's care across all of their Medicare and Medicaid services and benefits.



# Dual Eligible Special Needs Plans Webpage

## FAQ Tab

- Frequently asked questions with detailed responses and examples

### Dual Eligible Special Needs Plans for Medicare and Medicaid Enrollees

[Member](#)[FAQ](#)[Program Details](#)

#### Dual Eligible Individuals and Dual Eligible Special Needs Plans (D-SNP)

1. Who are dual eligible individuals?

▼

2. What is a Dual Eligible Special Needs Plan (D-SNP)?

▼

3. Who are the D-SNPs in Hawaii?

▼

The logo of the Hawaii Department of Health, featuring a stylized green leaf or flower shape.

# Dual Eligible Special Needs Plans Webpage

## Program Details Tab

- Detailed overview and information for individuals who have both Medicare and Medicaid and dual eligible special needs plans

### Dual Eligible Special Needs Plans for Medicare and Medicaid Enrollees

[Member](#)[FAQ](#)[Program Details](#)

#### Dual Eligible Individuals and Dual Eligible Special Needs Plans

##### *Who are dual eligible individuals?*

Dual eligible individuals are eligible and qualify for or have both Medicare and Medicaid—they are “dually eligible” for both health care programs.

Some dual eligible individuals qualify for all Medicare and Medicaid benefits. These individuals are called full benefit dual eligible individuals. Only full benefit dual eligible individuals can enroll in a dual eligible special needs plan in Hawaii.

Other dual eligible individuals qualify for all Medicare benefits, but do not qualify for all Medicaid benefits. These individuals are called partial benefit dual eligible individuals, and they may only get assistance with Medicare premiums, copays, and deductibles. Also, they cannot enroll in a dual eligible special needs plan in Hawaii.





# **PUBLIC COMMENT**

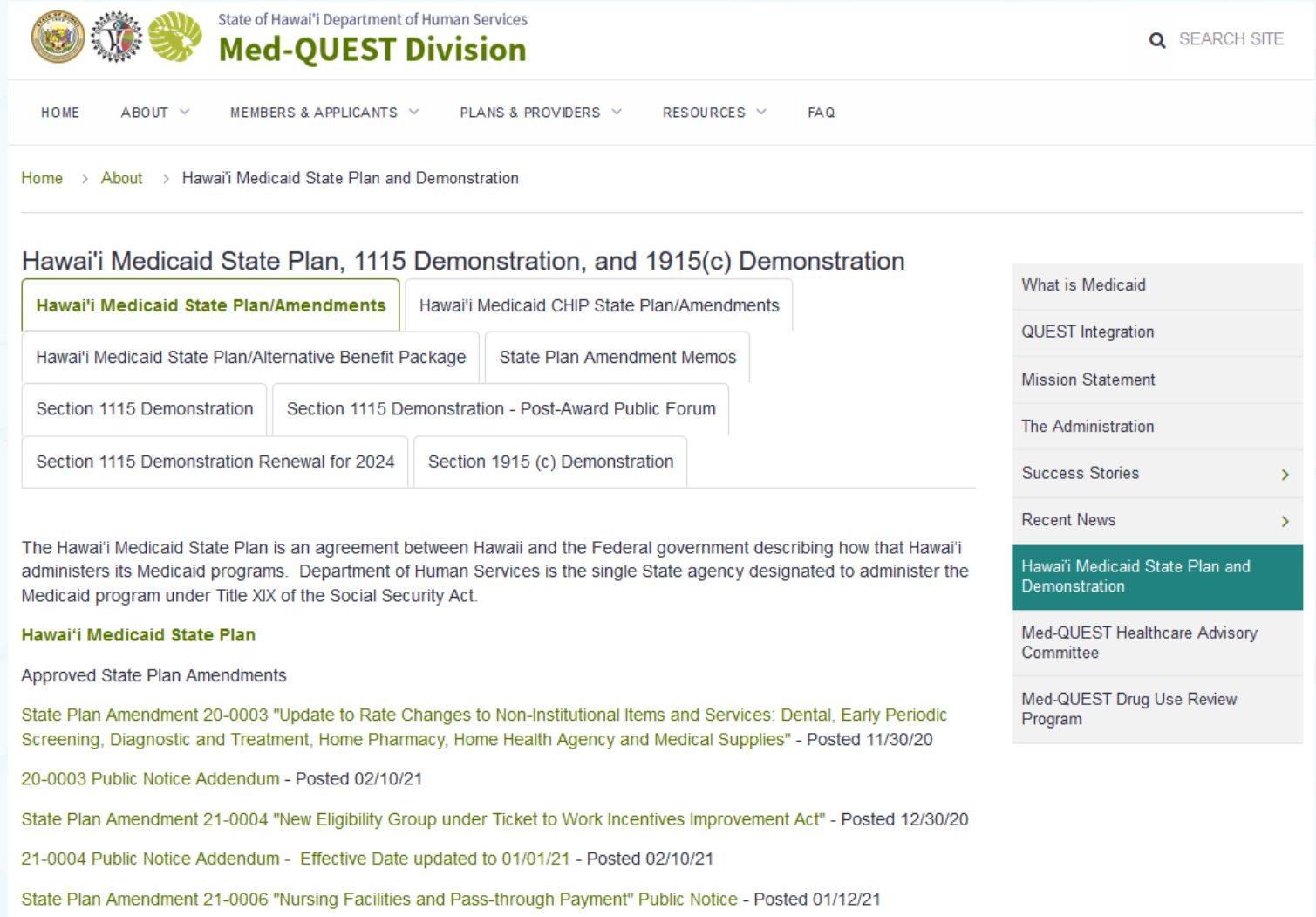


# **V. STATE PLAN AMENDMENT (SPA) PRESENTATIONS AND DISCUSSIONS: UPDATES 12/13/23**



# Hawaii Medicaid State Plan, 1115 & 1915(c) Demonstration Section on Med-QUEST website.

- Hawaii Medicaid/CHIP/Alternative Benefit State Plan Amendments (SPA) to be submitted to CMS and Public Notice if required.
- SPA Memos (contains CMS approved SPA version)
- 1115 Demonstration
- 1915 (c) Demonstration



The screenshot displays the Med-QUEST Division website. The header includes the State of Hawai'i Department of Human Services logo and the Med-QUEST Division name. A search bar is located in the top right corner. The navigation menu includes links for HOME, ABOUT, MEMBERS & APPLICANTS, PLANS & PROVIDERS, RESOURCES, and FAQ. The breadcrumb trail shows the path: Home > About > Hawai'i Medicaid State Plan and Demonstration. The main content area is titled "Hawai'i Medicaid State Plan, 1115 Demonstration, and 1915(c) Demonstration" and features a grid of links: "Hawai'i Medicaid State Plan/Amendments" (highlighted), "Hawai'i Medicaid CHIP State Plan/Amendments", "Hawai'i Medicaid State Plan/Alternative Benefit Package", "State Plan Amendment Memos", "Section 1115 Demonstration", "Section 1115 Demonstration - Post-Award Public Forum", "Section 1115 Demonstration Renewal for 2024", and "Section 1915 (c) Demonstration". A sidebar on the right lists various resources: "What is Medicaid", "QUEST Integration", "Mission Statement", "The Administration", "Success Stories", "Recent News", "Hawai'i Medicaid State Plan and Demonstration" (highlighted), "Med-QUEST Healthcare Advisory Committee", and "Med-QUEST Drug Use Review Program". The main content area also includes a paragraph about the Hawai'i Medicaid State Plan and a list of approved state plan amendments with their effective dates and public notice addendums.

State of Hawai'i Department of Human Services  
**Med-QUEST Division**

HOME ABOUT MEMBERS & APPLICANTS PLANS & PROVIDERS RESOURCES FAQ

Home > About > Hawai'i Medicaid State Plan and Demonstration

### Hawai'i Medicaid State Plan, 1115 Demonstration, and 1915(c) Demonstration

[Hawai'i Medicaid State Plan/Amendments](#) [Hawai'i Medicaid CHIP State Plan/Amendments](#)

[Hawai'i Medicaid State Plan/Alternative Benefit Package](#) [State Plan Amendment Memos](#)

[Section 1115 Demonstration](#) [Section 1115 Demonstration - Post-Award Public Forum](#)

[Section 1115 Demonstration Renewal for 2024](#) [Section 1915 \(c\) Demonstration](#)

The Hawai'i Medicaid State Plan is an agreement between Hawaii and the Federal government describing how that Hawai'i administers its Medicaid programs. Department of Human Services is the single State agency designated to administer the Medicaid program under Title XIX of the Social Security Act.

**Hawai'i Medicaid State Plan**

Approved State Plan Amendments

State Plan Amendment 20-0003 "Update to Rate Changes to Non-Institutional Items and Services: Dental, Early Periodic Screening, Diagnostic and Treatment, Home Pharmacy, Home Health Agency and Medical Supplies" - Posted 11/30/20

20-0003 Public Notice Addendum - Posted 02/10/21

State Plan Amendment 21-0004 "New Eligibility Group under Ticket to Work Incentives Improvement Act" - Posted 12/30/20

21-0004 Public Notice Addendum - Effective Date updated to 01/01/21 - Posted 02/10/21

State Plan Amendment 21-0006 "Nursing Facilities and Pass-through Payment" Public Notice - Posted 01/12/21

What is Medicaid

QUEST Integration

Mission Statement

The Administration

Success Stories >

Recent News >

**Hawai'i Medicaid State Plan and Demonstration**

Med-QUEST Healthcare Advisory Committee

Med-QUEST Drug Use Review Program

# State Plan Updates

---

- **SPA 23-0010 One Year Continuous Eligibility for Children Under Medicaid and CHIP-** Waiting on CMS review of Hawaii responses.
- **SPA 23-0014 Nursing Facility Payment Methodology Change-Preparing** -SPA packet for submission prior to 12/30/23. Public Notice posted 12/08/23
- **SPA 23-0004 Former Foster Care Medicaid Out of State** –Waiting on CMS review of Hawaii responses.
- **SPA 23-0007 Medicaid Application (DHS 1100 “Application For Health Coverage & Help Paying Costs”)** –Hawaii responding to additional questions from CMS.
- **SPA 22-0013 Community Palliative Care** -Hawaii responded to additional questions from CMS. Able to include SPA 23-0003 content Mandatory Medicaid and CHIP Adult Vaccine Coverage under this SPA RAI.



# SPA 22-0013 Community Palliative Care Services-page updates

---

## SPA language update:

- Preventive services assigned a grade A or B recommendation by the United States Preventive Services Task Force (USPSTF), approved vaccines and their administration recommended by the Advisory Committee on Immunization Practices (ACIP), preventive care and screening of infants, children and adolescents recommended by Health Resources & Services Administration HRSA's Bright Futures program and additional preventive services for women recommended by the National Academy of Medicine (NAM) formally known as the Institute of Medicine (IOM) will be covered without cost-sharing in accordance with section 2713 of the Public Health Service Act, which is in alignment with the Alternative Benefit Plan.
- The state will maintain documentation supporting expenditures claimed for and ensure that coverage and billing codes comply with USPSTF or ACIP recommendations, in accordance with section 4106 of the Affordable Care Act.
- Vaccines and Vaccine Administration as described in section 1905(a)(13)(B) of the Act are covered effective **10/01/2023**. As changes are made to ACIP recommendations, the state will update their coverage and billing codes to comply with those revisions.

SPA attachments and Public Notice were posted at <https://medquest.hawaii.gov/en/about/state-plan-1115.html> originally on 10/14/22. **Supplement to Attachment 3.1-A and 3.1-B pg. 4-4c posted on 12/08/23.**



# **V. STATE PLAN AMENDMENT PRESENTATIONS AND DISCUSSIONS: NEW**



# SPA 23-0008 Payment for Medical Professional Services

---

## Background:

Hawaii Med-QUEST Division (MQD) received funding during the 2023 legislative session to increase payment up to Medicare benchmark for most medical professional, non-institutional items and services. The changes in this payment methodology and the pages that are proposed for amendment in the Hawaii state plan are listed below:

## SPA language Changes:

### **Attachment 4.19-B pg.1**

1. Medicaid Fee Schedule effective date updated to January 1, 2024.
2. Physician Services in accordance with 42 CFR 447.400(a) and Behavioral Health Services are paid at 100% of the current Medicare Fee Schedule in effect for the prior calendar year.
3. Providers listed in the Medicare Fee Schedule who are non physician practitioners are subject to payment reductions by Medicare are paid in accordance to the current Medicare Fee schedule in effect for the prior calendar year.
4. Other Licensed Providers not listed above (i.e. licensed practitioners within the scope of their practice as defined by state law) providing services and non institutional items are paid at no less than 60% percent of the current Medicare Fee Schedule in effect for the prior calendar year or as required by federal law and regulations not to exceed 100% of the applicable Medicare rate:
  - a. This includes payment for services provided by licensed pharmacists (such as administration of vaccines). Payment for these services shall be made to the affiliated billing provider/Pharmacy, in accordance with the Hawaii Medicaid Fee Schedule located at <https://medquest.hawaii.gov/en/plans-providers/fee-for-service/feeschedules.html>

In addition, the following pages are amended to align with the current Medicare Fee Schedule (housekeeping purposes) :

Attachment 4.19-B pg. 1.2  
Attachment 4.19-B pg. 2  
Attachment 4.19-B pg. 2.1  
Attachment 4.19-B pg. 3  
Attachment 4.19-B pg. 5.1

**Submission to CMS 12/20/23**

**Proposed Effective Date 01/01/24**





# SPA 24-0002 Diabetes Prevention Program

---

## Background:

Hawaii Med-QUEST Division is proposing to amend the Medicaid State Plan to establish a Diabetes Prevention Program under the Preventative Services section of the Medicaid state plan estimated Effective 02/01/2024. Hawaii Medicaid will cover diabetes prevention services as outlined in the Centers for Disease Control and Prevention (CDC)-recognized National Diabetes Prevention Program (NDPP). The NDPP is an evidence-based, educational and support program designed to assist at-risk individuals from developing Type 2 diabetes.

## SPA language :

**Supplement to Attachment 3.1-A and 3.1-B pg. 4b.** Adds “Diabetes Prevention Program” description of services and who can provide them.

**Attachment 4.19-B pg. 1.2.** Describes payment methodology for services provided under the Diabetes Prevention Program.

**Submission to CMS 01/29/2024**

**Proposed Effective Date 02/01/2024**



# V. STATE PLAN AMENDMENT: Coming Soon

**24-0001 Yearly Optional State Supplementary Payment**

**24-0003 Non-Emergency Medical Transportation**



# **PUBLIC COMMENT**



A photograph of a lush field of taro plants. The plants feature large, vibrant green, heart-shaped leaves with prominent veins. The leaves are densely packed, creating a thick canopy. In the center of the image, the word "Mahalo!" is written in a large, white, sans-serif font. The background shows more of the same plants, with some dark stems visible. The overall scene is bright and healthy.

**Mahalo!**